

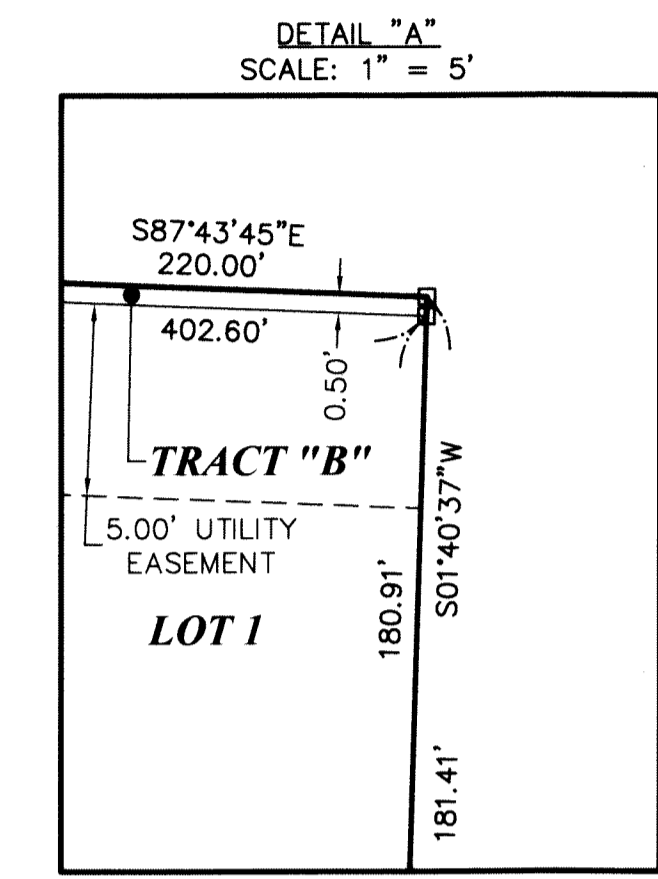
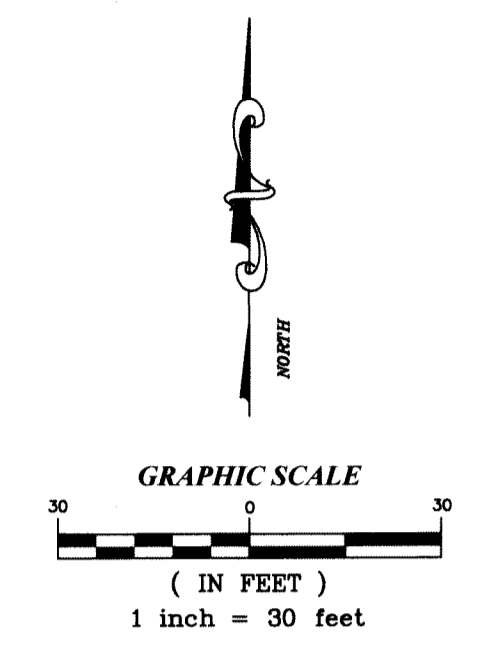
179

COUNTY OF PALM BEACH  
STATE OF FLORIDA  
THIS PLAT WAS FILED FOR RECORD AT  
THIS \_\_\_\_ DAY OF \_\_\_\_  
20\_\_ AND DULY RECORDED IN PLAT  
BOOK No. \_\_\_\_ ON PAGE \_\_\_\_  
SHARON R. BOCK, CLERK AND  
COMPTROLLER  
BY \_\_\_\_\_

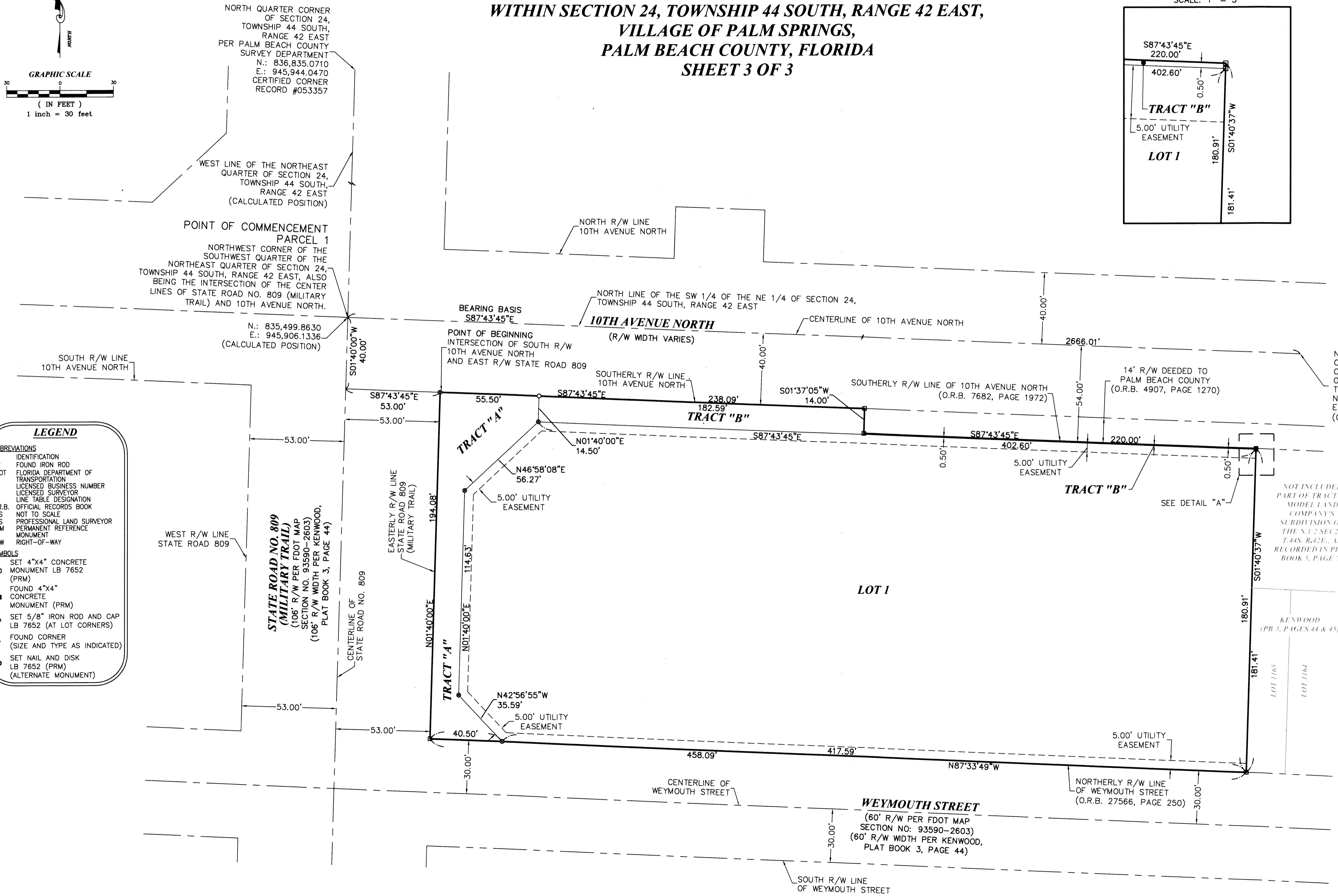
# BW 10TH AND MILITARY

BEING A REPLAT OF LOTS 1166 THROUGH 1179, INCLUSIVE, AND THAT CERTAIN ABANDONED 20' ALLEY LYING WEST OF LOT 1179 AND A PORTION OF LOTS 1180 THROUGH 1183, INCLUSIVE, KENWOOD, AS RECORDED IN PLAT BOOK 3, PAGES 44 AND 45, TOGETHER WITH A PORTION OF TRACT 20, MODEL LAND COMPANY'S SUBDIVISION OF THE N.1/2 SEC. 24 T.44S. R.42E., AS RECORDED IN PLAT BOOK 5, PAGE 76, OF THE PUBLIC RECORDS OF PALM BEACH COUNTY, FLORIDA. LYING WITHIN SECTION 24, TOWNSHIP 44 SOUTH, RANGE 42 EAST, VILLAGE OF PALM SPRINGS, PALM BEACH COUNTY, FLORIDA

## SHEET 3 OF 3



- LEGEND**
- ABBREVIATIONS**
- ID IDENTIFICATION
  - FIR FOUND IRON ROD
  - FDOT FLORIDA DEPARTMENT OF TRANSPORTATION
  - LB LICENSED BUSINESS NUMBER
  - LS LICENSED SURVEYOR
  - LI LINE TABLE DESIGNATION
  - O.R.B. OFFICIAL RECORDS BOOK
  - NTS NOT TO SCALE
  - PLS PROFESSIONAL LAND SURVEYOR
  - PRM PERMANENT REFERENCE MONUMENT
  - R/W RIGHT-OF-WAY
- SYMBOLS**
- SET 4"x4" CONCRETE MONUMENT LB 7652 (PRM)
  - FOUND 4"x4" CONCRETE MONUMENT (PRM)
  - SET 5/8" IRON ROD AND CAP LB 7652 (AT LOT CORNERS)
  - FOUND CORNER (SIZE AND TYPE AS INDICATED)
  - SET NAIL AND DISK LB 7652 (PRM) (ALTERNATE MONUMENT)



NORTHEAST CORNER OF THE SOUTHEAST QUARTER OF SECTION 24, TOWNSHIP 44 SOUTH, RANGE 42 EAST  
N.: 835394.2225  
E.: 948570.0460  
(CALCULATED POSITION)

NOT INCLUDED PART OF TRACT 20, MODEL LAND COMPANY'S SUBDIVISION OF THE N.1/2 SEC. 24 T.44S. R.42E., AS RECORDED IN PLAT BOOK 5, PAGE 76

KENWOOD (PB 3, PAGES 44 & 45)